



ASPIRE
— TO MOVE —



4 Fairfield Avenue, Bath, BA1 6NQ

£1,650 PCM



4 Fairfield Avenue, Bath, BA1 6NQ

£1,650 PCM

Aspire is delighted to present this beautifully refurbished three-bedroom family home, situated in the highly sought-after Fairfield Park area. Enjoy easy access to excellent local schools, as well as picturesque walks around Charlcombe right on your doorstep.

The ground floor features a garage with separate access, alongside a welcoming porch and entrance hall with stairs rising to the first floor.

On the first floor, you'll find a newly fitted, spacious kitchen with direct access to the three-tier rear garden. Also on this level is a bright and airy living room, offering far-reaching views towards Solsbury Hill. Both the kitchen and the living room are generously sized and each can comfortably accommodate a dining area.

The second floor hosts three bedrooms and a family bathroom. The main bedroom, positioned at the front of the property, benefits from built-in storage, abundant natural light, and lovely elevated views. The two further bedrooms overlook the rear garden. The well-proportioned family bathroom includes a shower over bath.

Please note: the carpets will be replaced prior to move-in.

Description

Set on the edge of Fairfield Park, within one and a half miles from the city centre and under a mile from Larkhall Square, the location is great for access to local schools including St. Stephen's Primary School and both Royal High and Kingswood School.

There is a regular city centre bus service to Bath Spa train station and the M4 motorway is easily accessible without having to cross the city by Lansdown or the Gloucester Road. Fairfield Park is well placed for exploring the surrounding countryside and Larkhall Square is a short downhill walk away.

Larkhall village offers an excellent range of local amenities, including a traditional butcher, deli, Co-op, two welcoming public houses, a pet shop, takeaways, coffee shop, gift shop, greengrocer, and a Post Office/Newsagent. The village also benefits from the beautiful St Saviour's Church.

Situation

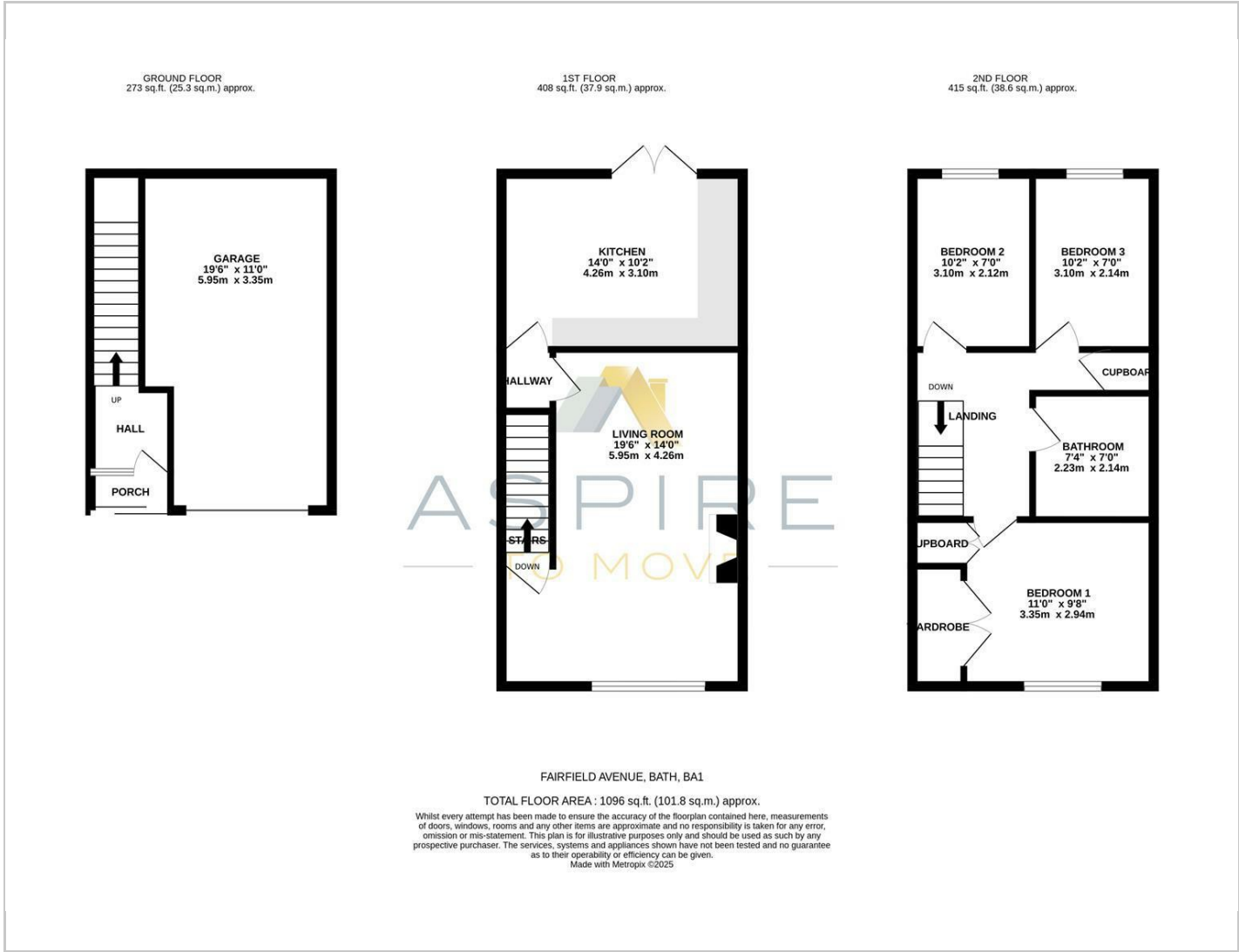


Unfurnished

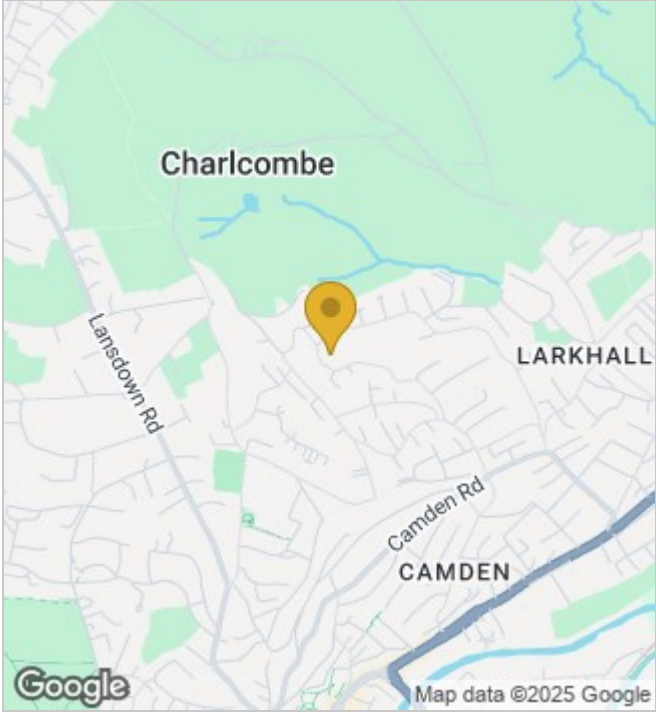
Council Tax Band: C

Available: 22nd December 2025

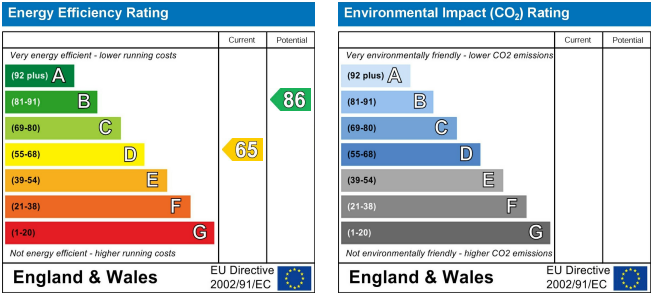
Floor Plans



Area Map



Energy Performance Graph



These particulars, whilst believed to be accurate are set out as a general outline only for guidance and do not constitute any part of an offer or contract. Intending purchasers should not rely on them as statements of representation of fact, but must satisfy themselves by inspection or otherwise as to their accuracy. No person in this firms employment has the authority to make or give any representation or warranty in respect of the property.